

TISSUE BANKING:

Honoring the Gift

Susan C. Sharpe, MS,MT(ASCP)SBB, CTBS
Transfusion Service & Tissue Bank Supervisor

Northside Hospital

Atlanta, GA



SURVEY

- Blood Bank/Transfusion Services tracking?



- Surgical Services tracking?
- Combination tracking?

What Have We Learned?

- We are excellent at tracking
- We are excellent at issuing
- We are excellent at updating implant records to ensure bi-directional traceability

What Else Can We Learn?

- Informed Consent
- Donor Suitability
- Recovery and Collection
- Processing, Preservation, Quarantine, and Storage
- Packaging & Shipping

Highlights

- **Honoring the Gift**
- Donor Informed Consent Process
- Donor Suitability
- Physical Assessment
- Donor Risk Assessment
- Required Donor Screening Tests
- Relevant Medical Records Review



Honoring the Gift

- “The gifts we are honored with are the final gift a person can give – the gift of life. This gift is from the heart of the donor and the donor’s family. We need to treat the gifts with respect.”



Diane Wilson, COO
Community Tissue Services

Highlights

- Honoring the Gift
- Donor Informed Consent Process
- Donor Suitability
- Physical Assessment
- Donor Risk Assessment
- Required Donor Screening Tests
- Relevant Medical Records Review



Donor Informed Consent Process

- Consenting Person
 - Potential donor
 - Person legally empowered to give consent
 - Deceased donor's NOK in order of legal precedence



Donor Informed Consent Process

- Consent Conditions
 - language in which Consenting Person is conversant
 - easily understandable terms by the Consenting Person



Donor Informed Consent Process

- Signatures

- Telephone

- Recorded
 - Sampling plan
 - Verification



- Facsimile

- Fax, signed, returned
 - Opportunity to ask questions



Donor Informed Consent Process

– Electronic Submission

- Consenting Person responds electronically, authorized to grant consent, and is granting such consent
- Opportunity to ask questions



– Self-signed document

- Valid driver's license
- Living Will
- Advanced directive
- Witnessed donor card



Highlights

- Honoring the Gift
- Donor Informed Consent Process
- **Donor Suitability**
- Physical Assessment
- Donor Risk Assessment
- Required Donor Screening Tests
- Relevant Medical Records Review



Donor Suitability

- General – established by Medical Director
 - Heart Donors



- No hx of CABG, bacterial endocarditis, rheumatic fever, semilunar valvular dz., or idiopathic or viral cardiomyopathy
- Case-by-case evaluation - previous cardiac surgery, CPR, cardiac fibrillations, penetrating cardiac injury



Donor Suitability

– Heart Donors



- SIDS – autopsy required for COD
- Mitral Valve donors – no hx mitral valve dz or prolapse
- Evaluate for Chaga's dz risk



Donor Suitability

- Vascular Donors

- Veins – no hx of vein stripping, varicose veins, or leg ulcers



- Arteries – no known or reported arteriosclerosis



- Trauma – evaluate on case-by-case basis

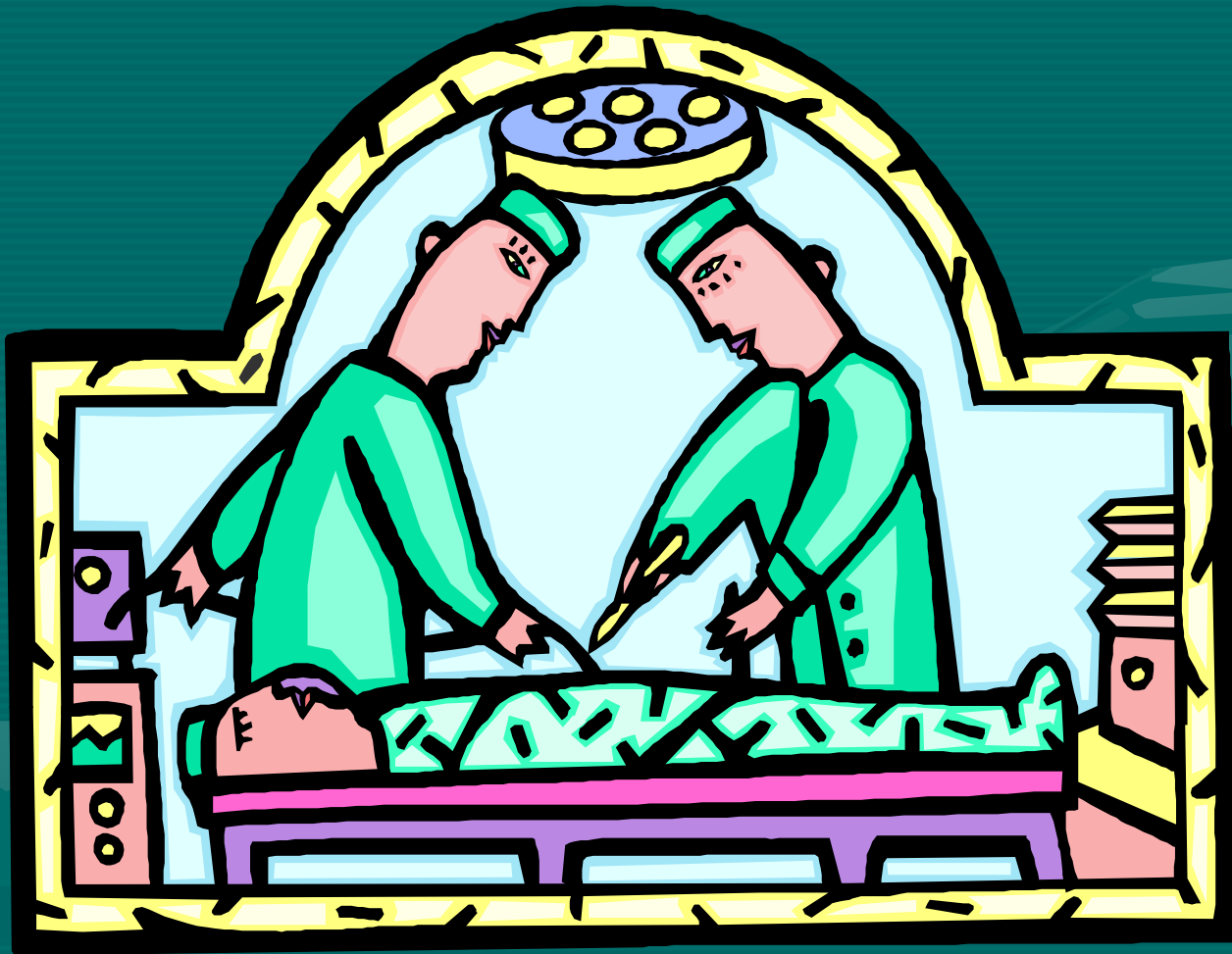


Highlights

- Honoring the Gift
- Donor Informed Consent Process
- Donor Suitability
- **Physical Assessment**
- Donor Risk Assessment
- Required Donor Screening Tests
- Relevant Medical Records Review



Physical Assessment



Physical Assessment

- Identify high risk behavior
- Signs of HIV or Hepatitis infection
- Viral or bacterial infections
- Trauma to potential recovery sites



Physical Assessment continued

- Tissue SHALL be rejected if risk of evidence of:
 - Sexually transmitted dz (genital lesions)
 - Syphilis



Physical Assessment continued

- Tissue SHALL be rejected if risk of evidence of:
 - Anal intercourse
 - Non-medical percutaneous drug use
 - Lymphadenopathy
 - Oral thrush
 - Blue or purple spots c/w Kaposi's sarcoma

